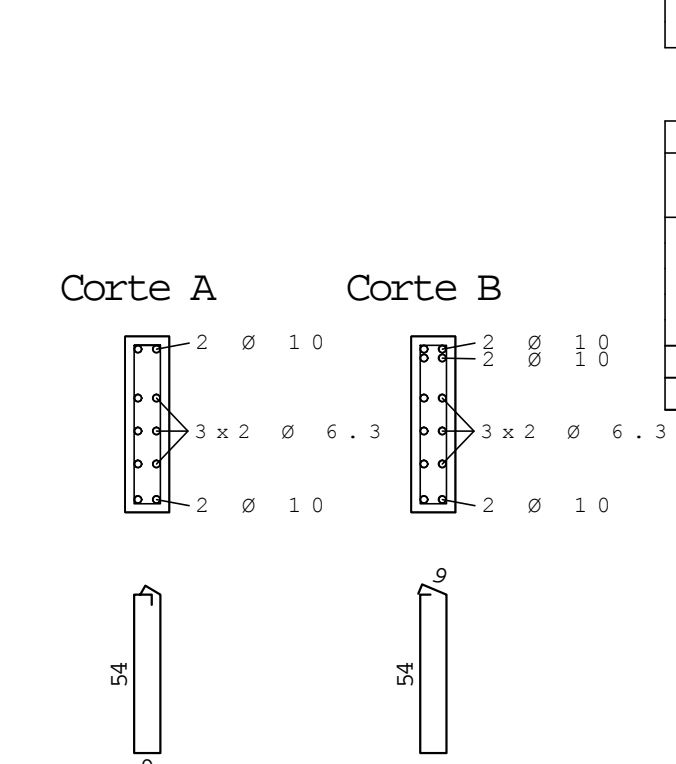
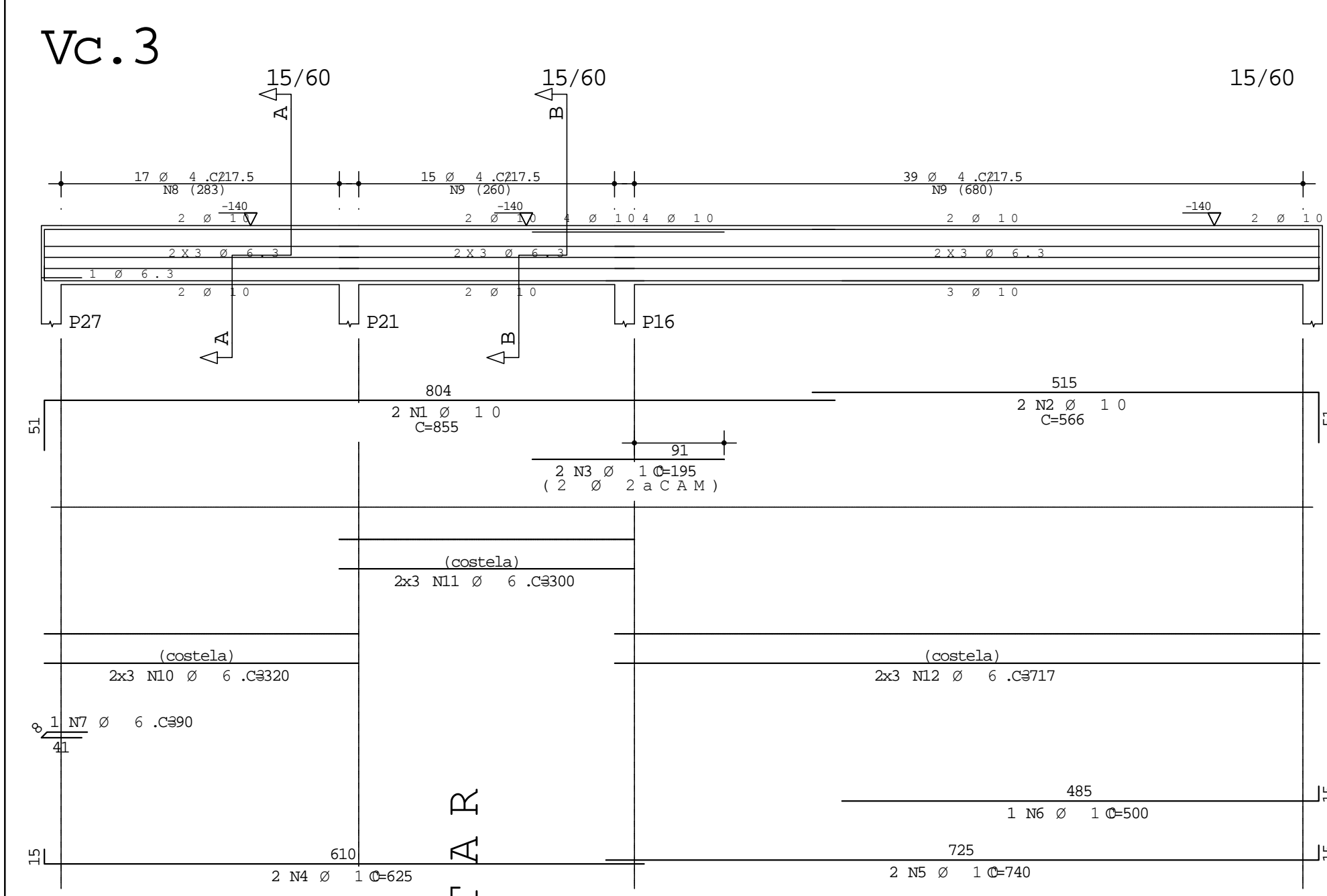
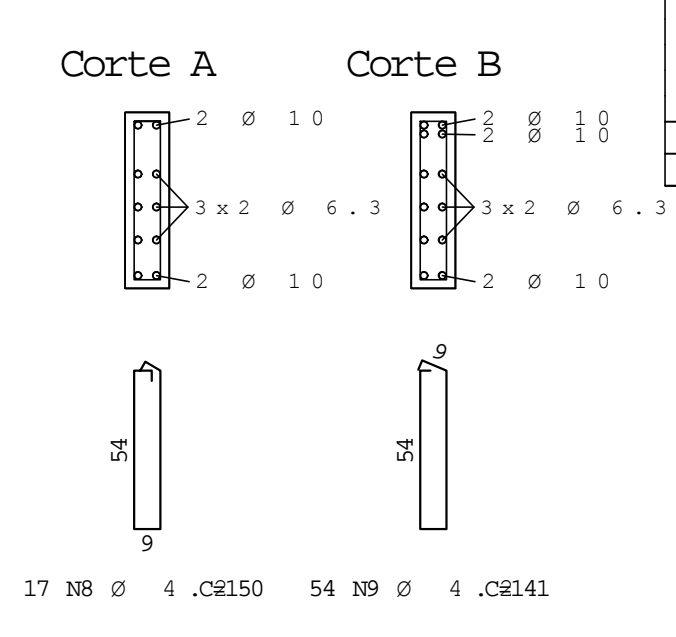
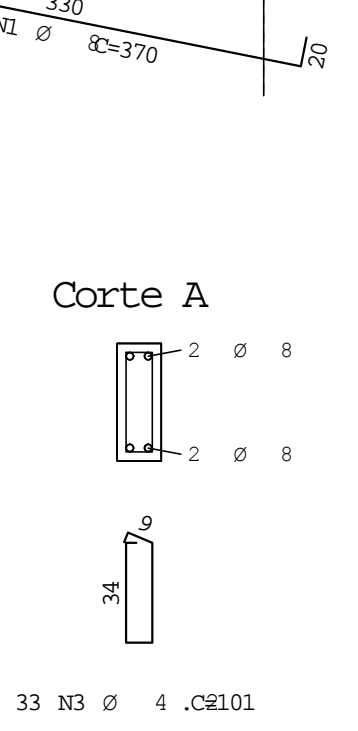
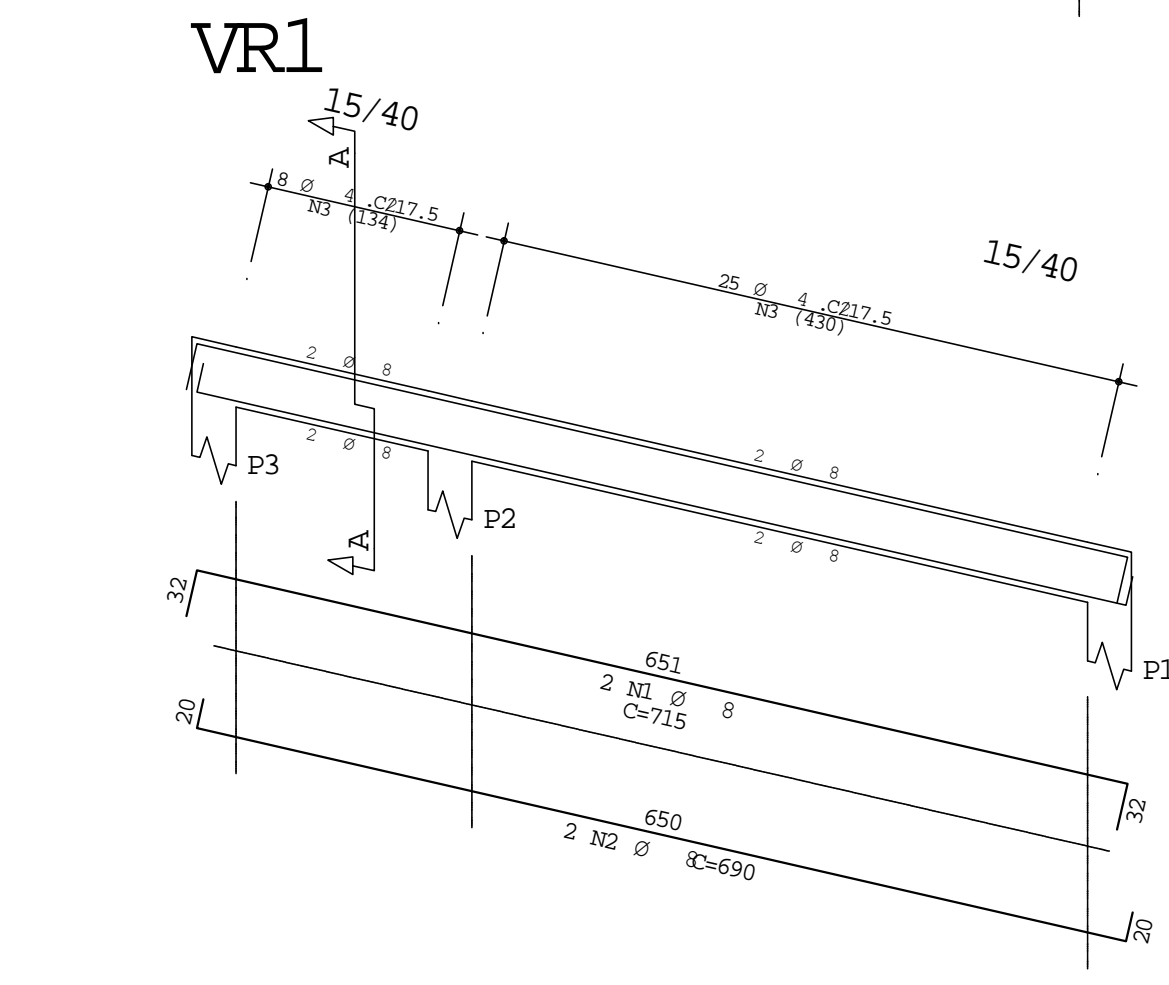
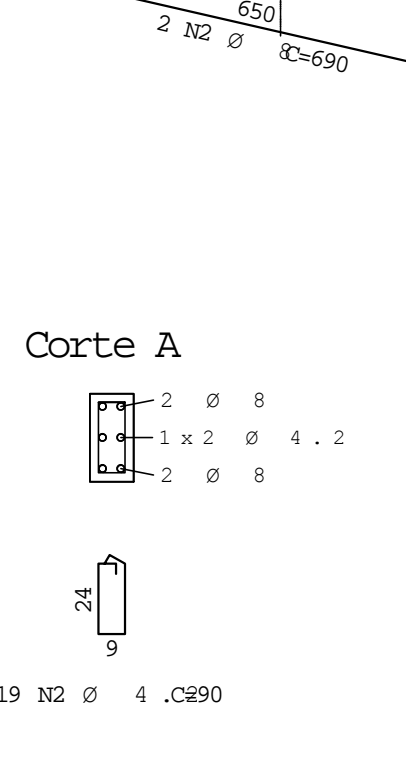
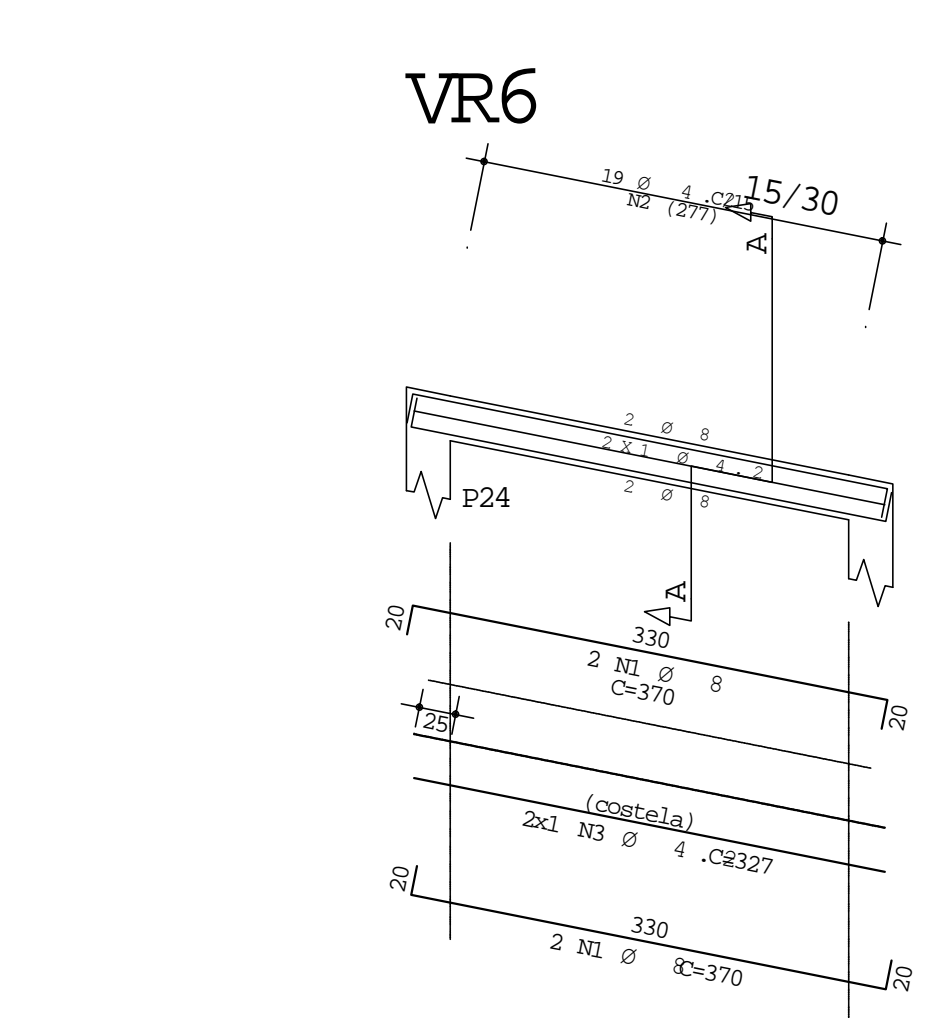
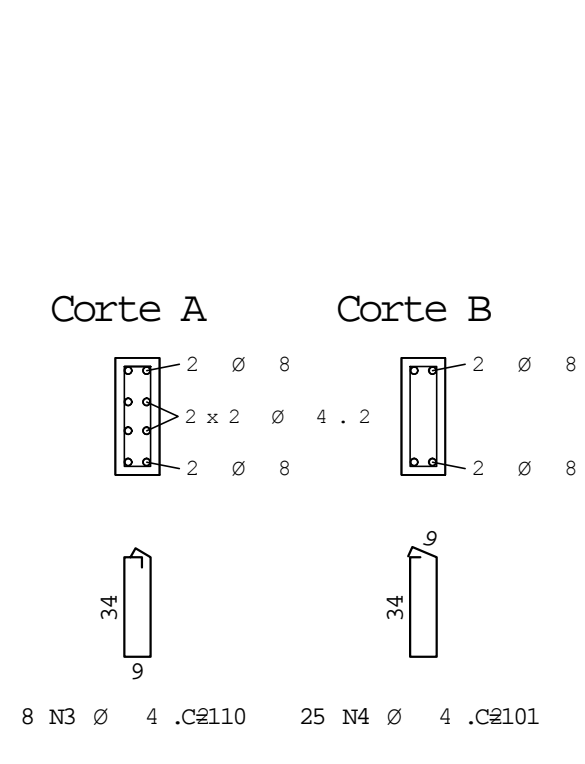
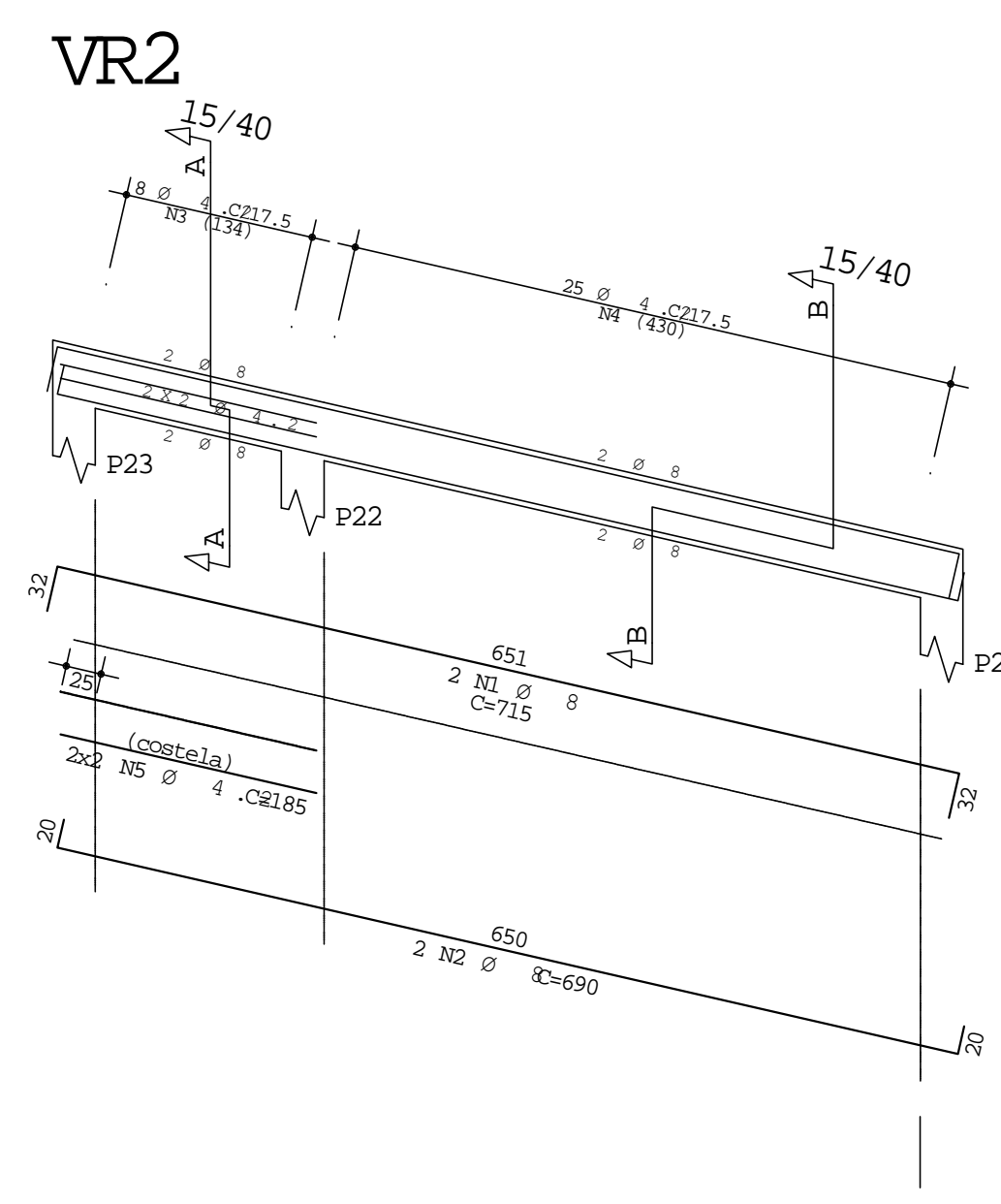


A Ç Ø	POS	BIT (mm)	QUANT	COMERIMENTO	
				UNIT (cm)	TOTAL (cm)
Vc.2					
50A	1	8	2	850	1700
50A	2	8	2	825	1650
60B	3	4,2	41	110	4510
60B	4	4,2	4	332	1328
60B	5	4,2	4	470	1680
Vc.3					
50A	1	10	2	855	1710
50A	2	10	2	566	1132
50A	3	10	2	195	390
50A	4	10	2	625	1250
50A	5	10	2	740	1480
50A	6	10	1	500	500
50A	7	6,3	1	90	90
60B	8	4,2	17	150	2550
60B	9	4,2	54	141	7614
50A	10	6,3	6	300	1800
50A	11	6,3	6	300	1800
50A	12	6,3	6	717	4302
Vc.4					
50A	1	8	2	210	420
50A	2	10	2	540	1080
60B	3	5	2	210	420
50A	4	10	2	170	340
50A	5	10	2	345	690
50A	6	8	2	200	400
50A	7	8	2	565	1130
50A	8	10	2	480	960
50A	9	8	2	360	720
50A	10	6,3	2	90	180
60B	11	4,2	41	101	4141
60B	12	4,2	30	110	3300
60B	13	4,2	4	240	960
60B	14	4,2	4	337	1348
Vc.5					
50A	1	8	2	195	390
50A	2	10	2	550	1100
50A	3	10	1	140	140
60B	4	5	2	210	420
50A	5	10	2	340	680
50A	6	10	2	170	340
50A	7	8	2	210	420
50A	8	8	2	480	960
50A	9	10	2	480	960
50A	10	8	2	360	720
50A	11	6,3	1	90	90
50A	12	6,3	1	90	90
60B	13	4,2	41	101	4141
60B	14	4,2	30	110	3300
60B	15	4,2	4	240	960
60B	16	4,2	4	337	1348

A Ç Ø	BIT (mm)	COMER (m)	PESO (kg)
60B	4,2	374	41
60B	5	8	1
50A	6,3	85	21
50A	8	87	34
50A	10	126	78
Peso Total 60B =			42 kg
Peso Total 50A =			133 kg



ARMAÇÃO: VIGAS DA COBERTURA
ARMAÇÃO: VIGAS DO EITÃO – INCLINADAS

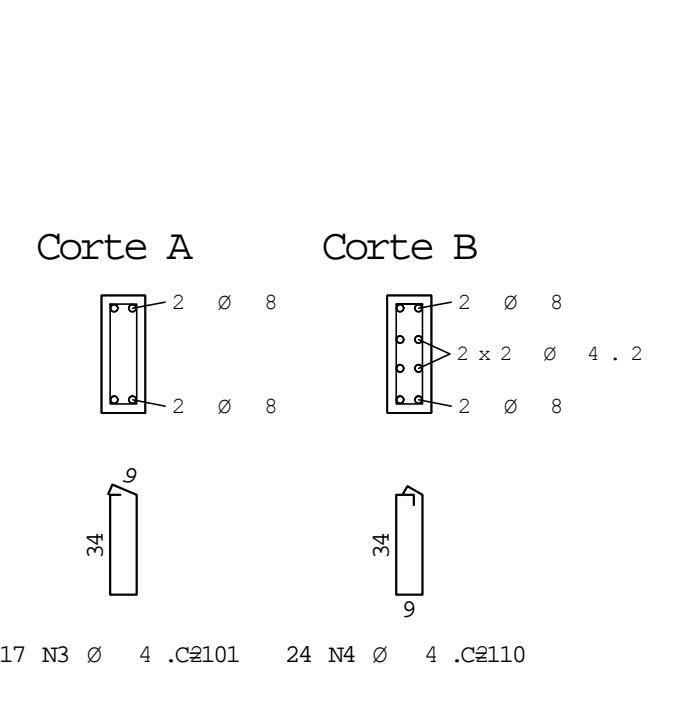
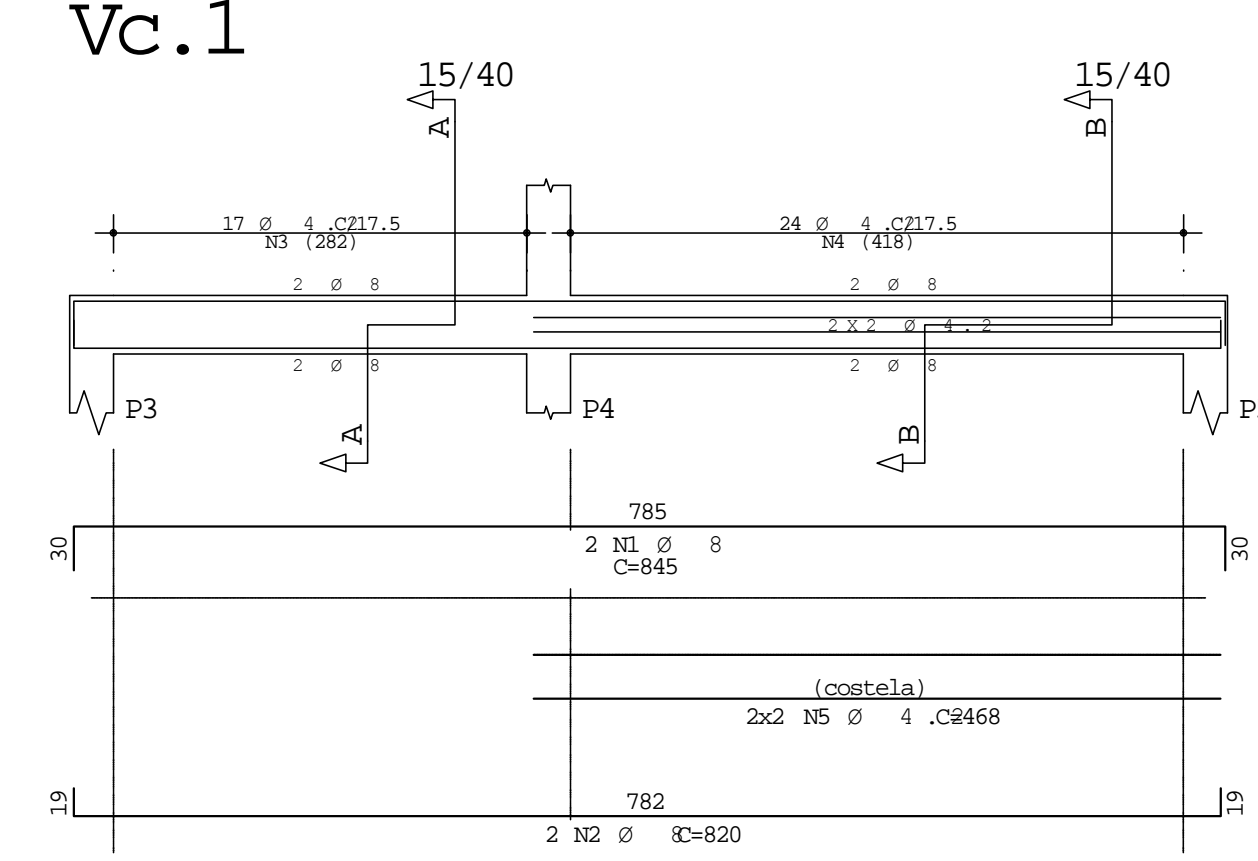


A Ç Ø	POS	BIT (mm)	QUANT	COMERIMENTO	
				UNIT (cm)	TOTAL (cm)
VR1					
50A	1	8	2	715	1430
50A	2	8	2	690	1380
60B	3	4,2	33	101	3333
VR2					
50A	1	8	2	715	1430
50A	2	8	2	690	1380
60B	3	4,2	33	110	3630
60B	4	4,2	4	335	1340
60B	5	4,2	4	330	1320
VR3					
50A	1	8	2	715	1430
50A	2	8	2	690	1380
60B	3	4,2	33	110	3630
60B	4	4,2	4	335	1340
60B	5	4,2	4	330	1320
VR4					
50A	1	8	4	380	1520
60B	2	4,2	20	90	1800
60B	3	4,2	2	337	674
VR5					
50A	1	8	4	510	2040
60B	2	4,2	28	90	2520
60B	3	4,2	2	465	930
VR6					
50A	1	8	4	370	1480
60B	2	4,2	19	90	1710
60B	3	4,2	2	465	930
VR7					
50A	1	8	4	510	2040
60B	2	4,2	28	90	2520
60B	3	4,2	2	465	930
VR8					
50A	1	8	4	505	2020
60B	2	4,2	28	90	2520
60B	3	4,2	2	462	924
VR9					
50A	1	8	4	385	1540
60B	2	4,2	20	90	1800
60B	3	4,2	2	362	724

A Ç Ø	BIT (mm)	COMER (m)	PESO (kg)
60B	4,2	314	34
50A	8	191	75
Peso Total 60B =			34 kg
Peso Total 50A =			75 kg

ESTUDO - NÃO EXECUTAR

Vc.1



A Ç Ø	POS	BIT (mm)	QUANT	COMERIMENTO	
				UNIT (cm)	TOTAL (cm)
Vc.1					
50A	1	8	2	845	1690
50A	2	8	2	820	1640
60B	3	4,2	17	101	1717
60B	4	4,2	24	110	2640
60B	5	4,2	4	668	1872

A Ç Ø	BIT (mm)	COMER (m)	PESO (kg)
60B	4,2	62	13
50A	8	33	7
Peso Total 60B =			13 kg
Peso Total 50A =			13 kg

ESTRUTURAL					DEB. N.º
UENP.CLM					DEB. N.º
NEAT					
ARMAÇÃO: VIGAS DA COBERTURA ARMAÇÃO: VIGAS DO EITÃO – INCLINADAS					TRU 07 /07
DATA 27/09/18 ESCALA 1/75 PKR 20 MPA DESBRO 1000P					DEB. N.º
					DEB. N.º LINCOLN